

# Stratigraphic and Paleoenvironmental Reconstruction of a Mid-Pliocene Fossil Site in the High Arctic (Ellesmere Island, Nunavut): Evidence of an Ancient Peatland with Beaver Activity

William Travis Mitchell, Natalia Rybczynski, Claudia Schröder-Adams, Paul B. Hamilton,  
Robin Smith and Marianne Douglas

## APPENDIX 1

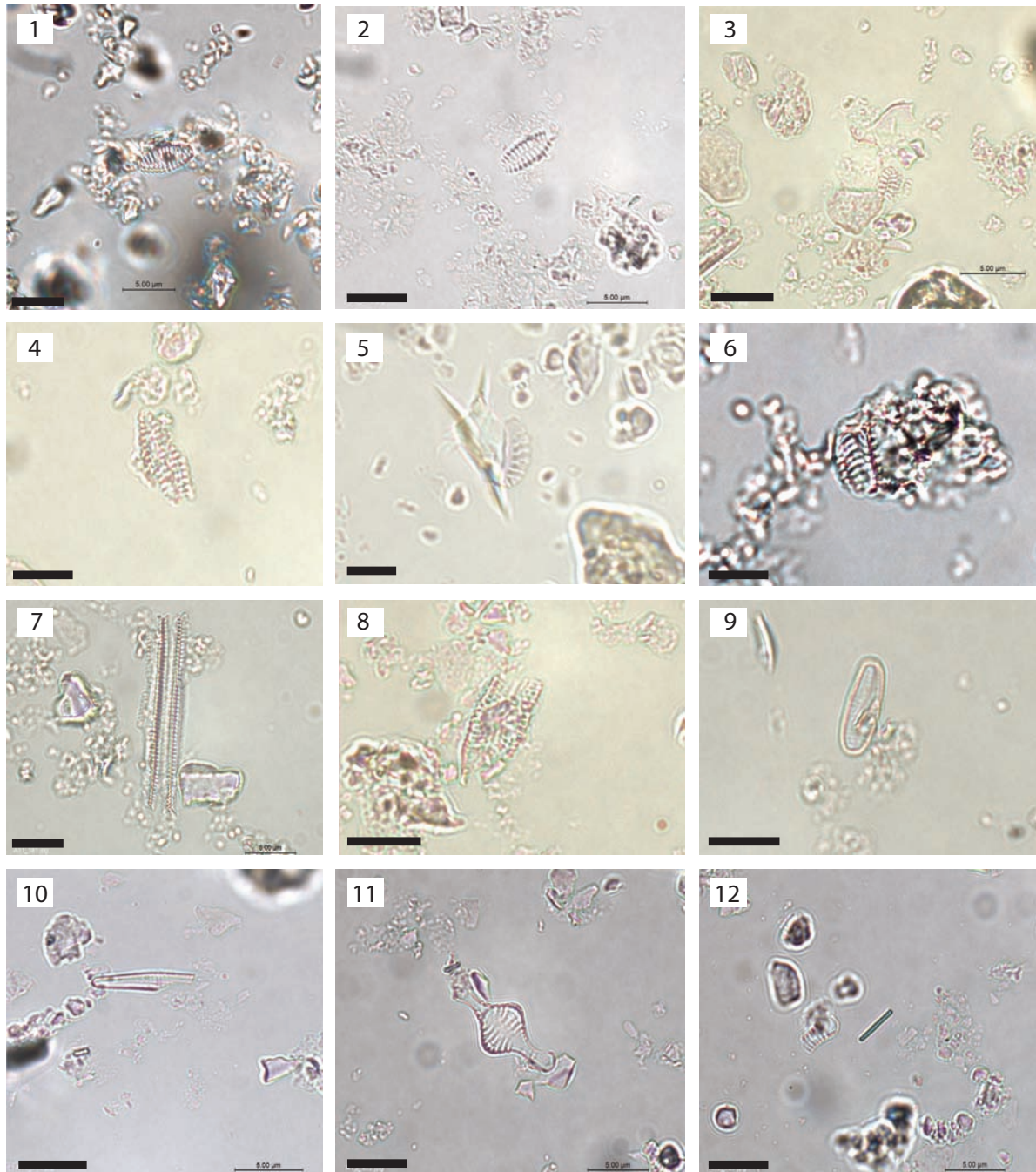


FIG. S1. Diatom taxa from the Beaver Pond fossil site: 1–3) *Staurosira venter*; 4–6) Fragilarioid taxa; 7) *Fragilaria* sp. (side view); 8) *Cymbella* sp.; 9–10) *Achnanthisdium* sp.; 11) *Tabellaria flocculosa*; 12) *Tabellaria* sp. fragment. Scale bars = 5  $\mu$ m.

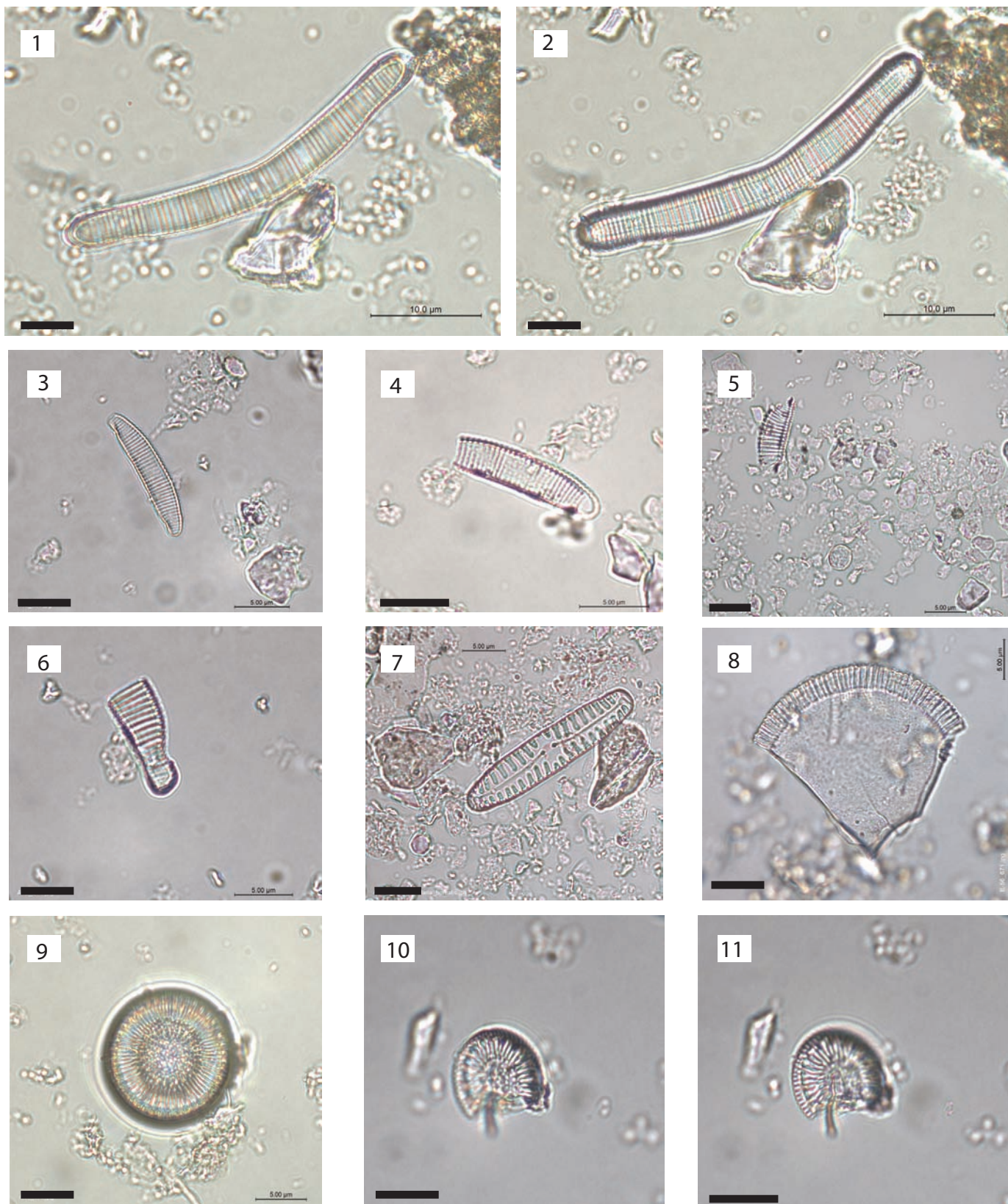


FIG. S2. Diatom taxa recovered from the Beaver Pond fossil site: 1–2) *Eunotia glacialis*; 3–4) *Eunotia incisa*; 5–6) *Eunotia* sp.; 7) *Pinnularia borealis*; 8) *Ellerbeckia arenaria*; 9–11) *Puncticulata bodanica*. Scale bars = 5 µm.