

**PARTITIONING THE 5×5 ARRAY INTO RESTRICTIONS
OF CIRCLES**

ROBERT J. MACG. DAWSON

ABSTRACT. We show that there is a unique way to partition a 5×5 array of lattice points into restrictions of five circles. This result is extended to the 6×5 array, and used to show the optimality of a six-circle solution for the 6×6 array.

1. INTRODUCTION

In the notes of the late Ross Honsberger, the following problem was found, labeled as “Eddie’s problem” [3]:

Given a 5×5 array of lattice points, draw a set of circles that collectively pass through each of the lattice points exactly once.

(Here, and throughout, by “circle” we will mean proper circles, not straight lines.)

This problem appeared in Crux Mathematicorum as problem CC226. One reader [2] gave a solution in the form of a set of concentric circles (Fig. 1d) including circles with as many radii as necessary to cover the array. Clearly, such a solution exists for any set of points; and for an $n \times n$ square grid array (which we will refer to as $G_{n,n}$) it requires at most

$$(1.1) \quad \binom{\lceil n/2 \rceil}{2}$$

circles. In fact, for even $n \geq 8$ and odd $n \geq 11$ there are nontrivial coincidences in radii, and the number of circles required is correspondingly fewer.

As stated, this problem is somewhat obvious; and it seems unlikely that it was what Honsberger actually had in mind. The note may well have been intended merely as an *aide-mémoire* for a more challenging problem. The following possible reconstruction was suggested in an editorial comment [5]:

(1) *Given a 5×5 array of lattice points, show that you can draw a set of 5 circles that collectively pass through each of the lattice points exactly once.*

Received by the editors November 15, 2018, and in revised form February 26, 2019.

2010 *Mathematics Subject Classification.* 52C15.

Key words and phrases. partition, circles, grid, sums of two squares.

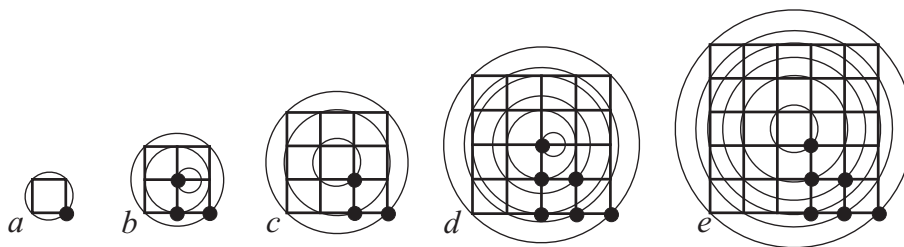


FIGURE 1. A simple family of solutions, nonoptimal for the 5×5 grid

(2) Show that this cannot be done with four circles, even if two circles are allowed to pass through the same point.

A solution to part (1) is shown in Fig. 2. On the left, the circles are shown as curves; on the right, the same circles are shown as discrete sets, partitioning $G_{5,5}$.

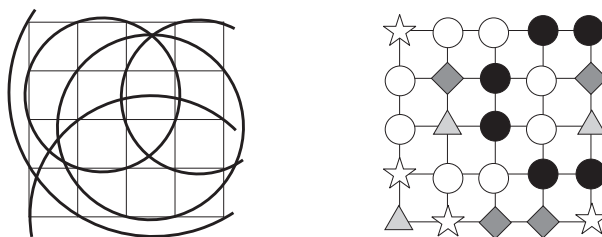


FIGURE 2. The unique partitioning of $G_{5,5}$ into restrictions of circles

Theorem 1.1. *The partitioning of $G_{5,5}$ shown in Fig. 2 is unique up to symmetry.*

(The proof is given in section 2.)

While the configuration of Fig. 2 is asymmetric, inspection shows that it can be extended to a symmetric partition of a 6×5 array, as shown in Fig. 3.

Corollary 1.2. *The partitioning of $G_{6,5}$ shown in Fig. 3 is unique up to symmetry.*

Fig. 1e shows that a 6×6 grid can be partitioned into restrictions of six circles. However, it is easily seen that the circles of Fig. 3 do not cover a further rank of six points above or below the grid shown. We thus have

Corollary 1.3. *The array $G_{6,6}$ can be partitioned into restrictions of six circles but not with five.*

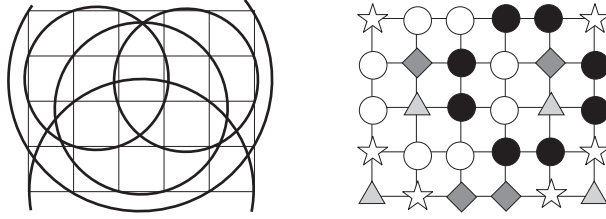


FIGURE 3. The unique partitioning of $G_{6,5}$ into restrictions of circles

If we consider sets of circles as shown in Figs. 1–3 to be “partitionings”, then a set of circles that contains a specified set in its union, and may cover a point more than once, is a “covering.” It follows from Theorem 1.1 that there is no partitioning of $G_{5,5}$ into restrictions of four circles; but in fact more is true.

Theorem 1.4. *The array $G_{5,5}$ cannot be covered with four circles.*

(The proof is given in section 3.)

We may ask how many circles are needed to partition larger grids. For odd $n > 5$, we can replace the inner 5×5 grid of the concentric-circle solution of Fig. 1 with the configuration of Fig. 2, reducing the number of circles by one. (Thus, for instance, $G_{7,7}$ can be partitioned into restrictions of nine circles, rather than ten.)

An upper bound on the number of circles required to cover all points of $G_{n,n}$ is $S(2n^2)$, where $S(k)$ is the number of positive integers not exceeding k that can be expressed as the sum of two squares. Landau [4] gave an estimate for this:

Theorem 1.5 (Landau).

$$\lim_{k \rightarrow \infty} S(k) \frac{\sqrt{\ln k}}{k} = \lambda,$$

where $\lambda = 0.76422\dots$ is the Landau–Ramanujan constant.

Thus, for large n , the number of circles needed to cover all points of $G_{n,n}$ is approximately $\sqrt{2}\lambda n^2 / \sqrt{\ln n}$, a significant improvement on (1.1).

2. PROOF OF THEOREM 1.1

Proposition 2.1. *The two configurations A_5 and B_5 shown in Fig. 4 are, up to symmetry, the only ways in which a circle can intersect $G_{5,5}$ in exactly five points.*

Proof. We note that each of A_5 and B_5 has a single mirror symmetry, and hence can be embedded in $G_{5,5}$ in exactly four ways. To show that there are no other five-point circles, we use MAPLE to search noncollinear triples for

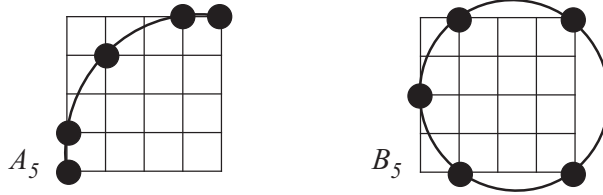


FIGURE 4. The two five-point circles

those that can be extended in exactly two ways to yield concyclic quadruples. We use the `geometry` and `combinat` packages, and create a list `Allpoints` that contains the 25 points of the grid $[P_{00}, P_{01}, P_{02}, \dots, P_{44}]$ where P_{ij} represents the point (i, j) .

```
Triplets := select(j → not AreCollinear(j[1], j[2], j[3]),
choose(Allpoints, 3)):
numelems(select(i → evalb(numelems(select(j →
AreConcyclic(i[1], i[2], i[3], j), Allpoints)) = 5), Triplets));
```

The first command creates a list of all noncollinear triplets on the grid. In the second command we count the triplets that can be extended *using a fourth point of the grid* to a concyclic quadruple in exactly five ways. We check for five values of j , not two, because whenever j duplicates one of the elements of the triplet the resulting degenerate quadruple will be trivially concyclic. It returns the value 80 $(\binom{5}{3} \times 4 \times 2)$ and we conclude that the two types of circle described above are the only five-point circles on a $G_{5,5}$ grid. \square

Proposition 2.2. *Up to symmetry, the two configurations C_8 and D_8 shown in Fig. 5 are the only ways in which a circle can intersect $G_{5,5}$ in exactly eight points; and the two configurations C_6 and D_6 are the only ways in which a circle can intersect $G_{5,5}$ in exactly six points. No circle can intersect $G_{5,5}$ in exactly seven points.*

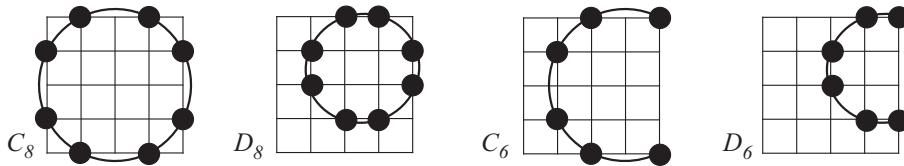


FIGURE 5. The two eight-point circles and their six-point restrictions

Proof. A circle of six or more points on $G_{5,5}$ must have two points on one file and two on one rank. These define the center of the circle as the intersection

of perpendicular bisectors $x = a$ and $y = b$ where $2a$ and $2b$ are integers in the range $[1, \dots, 7]$. Without loss of generality let

$$(2.1) \quad 0 < a \leq b \leq 2 .$$

Suppose that $(a - p/2, b + q/2)$ and $(a + p/2, b + q/2)$ generate $x = a$ as a perpendicular bisector; then (2.1) implies that $p + q \leq 8$, so

$$(2.2) \quad p^2 + q^2 \leq 64 .$$

Suppose that the point $(a + r/2, b + s/2)$ is on a different orbit of the symmetry group of the circle restricted to $\mathbb{Z} \times \mathbb{Z}$ (that is, $\{|p|, |q|\} \neq \{|r|, |s|\}$). Then we have a nontrivial solution to

$$(2.3) \quad r^2 + s^2 = p^2 + q^2 .$$

The only solutions to (2.2) and (2.3) are $\{(7, 1), (5, 5)\}$ and $\{(5, 0), (3, 4)\}$; but these give the five-point circles above. We conclude that any circle or partial circle with six or more points within the $G_{5,5}$ grid must have a single orbit. Six of the eight points $(a \pm p/2, b \pm q/2)$, $(a \pm q/2, b \pm p/2)$ must lie in $G_{5,5}$ and be distinct; thus (without loss of generality) $0 < p < q \leq 4$, and p and q must have the same parity. The only solutions are $p = 2, q = 4$ and $p = 1, q = 3$.

The former gives a circle C_8 (see Fig. 5) with a gridpoint center and radius $\sqrt{5}$, while the latter gives a circle D_8 with radius $\sqrt{10}/2$, whose center has half-integer coordinates. Either of these can be placed entirely on $G_{5,5}$ or with two points missing to yield six-point circles C_6 and D_6 . C_8 is unique, the other three are unique up to symmetry. \square

Inspection shows that only the following pairs of “large circles” can coexist on a 5×5 grid: A_5 with itself, D_8 or D_6 ; B_5 with itself, C_6 , or D_8 ; D_6 with D_8 ; and C_6 with C_8 . All of these are unique up to symmetry except for $\{A_5, D_8\}$ which has two forms; and none allow a third large circle.

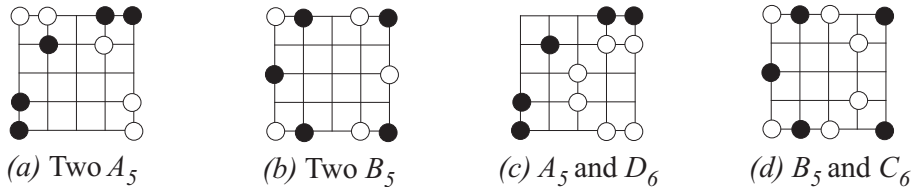


FIGURE 6. Disjoint pairs of circles with five or six points

Proposition 2.3. *No five-circle partition of $G_{5,5}$ uses A_5 or B_5 .*

Proof. Placing a five-point circle on $G_{5,5}$ leaves 20 points to cover with four circles, only one of which can have more than four points — hence an eight-point circle and three four-point circles. Using Maple, we create a list `Used` of points already used. For instance, in Fig. 7a, we get

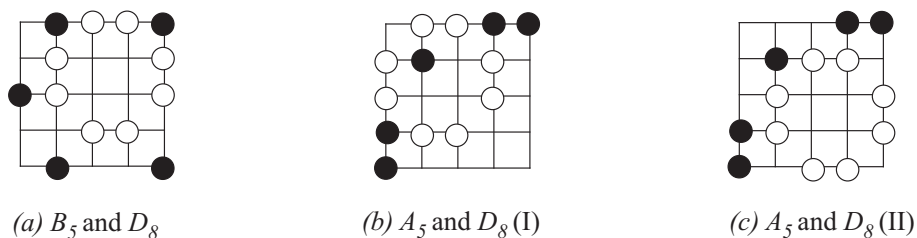


FIGURE 7. Disjoint pairs of circles with five and eight points

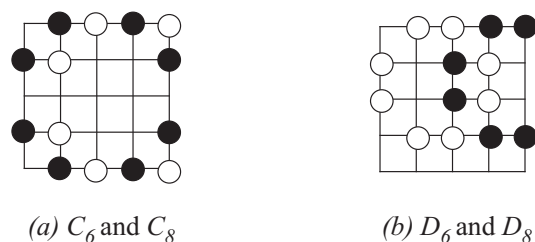


FIGURE 8. Disjoint pairs of circles with six and eight points

Used := [P02, P10, P12, P13, P14, P21, P24, P31, P34, P40, P42, P43, P44]

The list Free is its complement, omitting one point (here P_{41}) that we wish to test.

Free := [P00, P01, P03, P04, P11, P20, P22, P23, P30, P32, P33]

We create a list FreeTriplets of all triplets from Free:

```
FreeTriplets := select(j → not AreCollinear(j[1], j[2], j[3]),
choose(Free, 3)):
```

We select from those the subset that are concyclic with the chosen point:

```
Cyc := select(i → AreConcyclic(i[1], i[2], i[3], P41),
FreeTriplets)
```

and we choose from Cyc those points (if any) that yield a circle that does not intersect Used:

```
CanAddThis := select(i → evalb(numelems(select(j → AreConcyclic
(i[1], i[2], i[3], j), Used)) = 0), Cyc)
```

For Used as shown, and P_{41} as the test point (Fig. 9), the search algorithm returns an empty list: that is, no four-point circle passes through P_{41} and avoids B_5 and D_8 . We conclude that the configuration of Fig. 7a cannot be part of a five-circle partition of $G_{5,5}$.

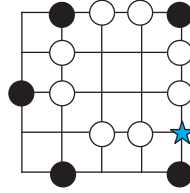


FIGURE 9. Trying to extend the configuration of Fig. 7a

Now let **Used** be the union of the A_5 and the D_8 shown in Fig. 7b, with test point P_{31} (Fig. 10a). The algorithm returns a single four-point circle (Fig. 10b). We move those points from **Free** to **Used**, and use P_{04} as our test point; no four-point circle passes through that point and avoids the already-assigned points. Thus, the configuration of Fig. 7b cannot be part of a five-circle partition of $G_{5,5}$.

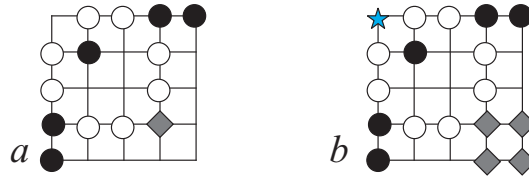


FIGURE 10. Extending the configuration of Fig. 7b

Finally, we try the arrangement of Fig. 7c. With P_{40} as test point (Fig. 11a), we get the unique four-point circle shown in Fig. 11b. As before, we move those points to **Used** and use P_{10} as test point; this time we get no four-point circle, and we conclude that there are no partitions of $G_{5,5}$ into restrictions of five circles, one of which is A_5 or B_5 . \square

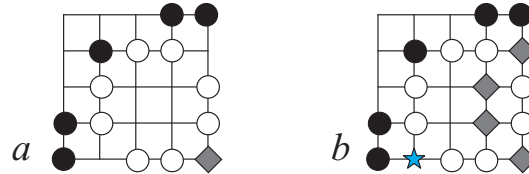


FIGURE 11. Extending the configuration of Fig. 7c

Any five-circle partition, then, extends one of the configurations of Fig. 8; and, as well as the eight-point circle and six-point circle, must contain two four-point circles and a three-point circle.

Proposition 2.4. *There is no five-circle partition of $G_{5,5}$ using C_8 and C_6 .*

Proof. As above, we search for four-point circles through a chosen point that do not overlap existing circles. We find that for the $\{C_8, C_6\}$ configuration, oriented as shown in Fig. 8a, no four-point circle can be placed through P_{02} (see Fig. 12a). This does not rule out the original configuration, but shows that P_{02} must be on the three-point circle.

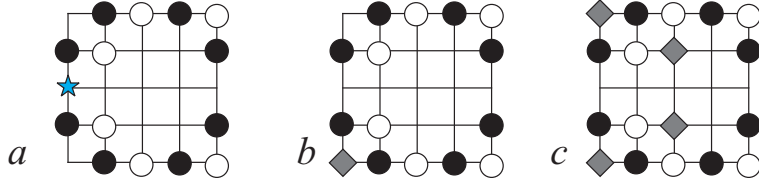


FIGURE 12. Extending the configuration of Fig. 8a

We now test P_{00} (Fig. 12b), and find that if it is on a four-point circle, the other points are P_{04} , P_{21} , and P_{23} , as shown in Fig. 12c. This, however, leaves the third rank to be covered by two circles; and this is impossible, as a circle can only meet a line twice. It follows that that P_{00} , too, is on a three-point circle; and the same argument holds, by symmetry, for P_{04} .

But P_{00} , P_{02} , and P_{04} are collinear, and cannot all lie on one circle; we conclude that there is no five-circle tiling of $G_{5,5}$ using C_8 and C_6 . \square

It follows that a five-circle partition of $G_{5,5}$ must include a D_8 and a D_6 , positioned (without loss of generality) as shown in Fig. 8b; we are now ready to complete the proof of Theorem 1. We find that there are no four-point circles disjoint from D_8 and D_6 passing through P_{00} ; P_{00} must therefore be on the three-point circle.

Every four-point circle through P_{30} that does not intersect D_6 or D_8 also contains P_{20} . Thus, if P_{20} were on the three-point circle, it would have to be with P_{00} and P_{30} ; but these are collinear, a contradiction. We conclude that P_{20} must be on a four-point circle; there are only two possibilities.

Case 1: P_{20} , P_{10} , P_{42} and P_{43} are on a circle (Fig. 13a).

There are only two four-point circles among the remaining six points (Fig. 13b,c). Either one leaves two points collinear with P_{00} , and these do not lie on a three-point circle.

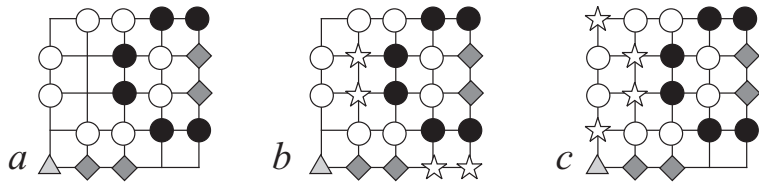


FIGURE 13. Configurations with D_8 and D_6

Case 2: P_{20}, P_{13}, P_{30} , and P_{43} are on a circle (Fig. 14a).

There are only two four-point circles among the remaining six points; both include P_{10} and P_{40} . If the other two points on the circle are P_{12} and P_{42} , (Fig. 14b,) then the remaining two points (P_{01} and P_{04}) are collinear with P_{00} , so there is no three-point circle. We are left, as our only remaining option, with the configuration of Fig. 14c—which is that of Fig. 2.

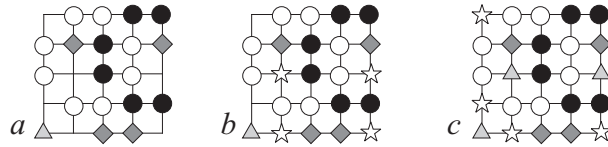


FIGURE 14. More configurations with D_8 and D_6

3. PROOF OF THEOREM 2

Four circles, each covering fewer than eight points, cannot cover more than 24 points; thus, to cover $G_{5,5}$, an eight-point circle would be required. There can be no three- or four-point circle in the covering, because that and the eight-point circle would leave at least 13 points to be covered by two more circles; and any further eight-point circle covers only six points in the complement of the first.

But no eight-point circle covers P_{00} , P_{04} , P_{22} , P_{40} , or P_{44} , and no five- or six-point circle can cover more than two of these five points. We must therefore have three five- or six-point circles. Any two six-point circles have at least one point in common, so a set of circles of cardinalities 8, 6, 6, and 5 has a union of less than 25 points. We thus rule out any five-point circle.

Moreover, C_6 is the only large circle that covers P_{22} ; so one circle of this type is required. It must intersect the eight-point circle in two points (Fig. 15 a, b, c, d) or not at all (Fig. 15 e). If the C_6 intersects the eight-point circle, they only cover twelve points between them, and the remaining thirteen points cannot be covered by two six-point circles. If they do not intersect, then between them they leave a set of five collinear points uncovered, which cannot be covered by the two remaining circles.

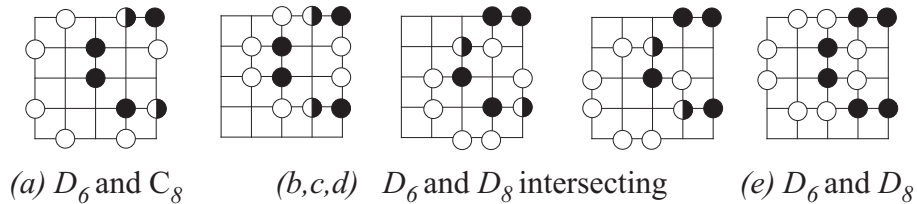


FIGURE 15. Ways in which D_6 can meet an eight-point circle

4. CONCLUSIONS AND OPEN QUESTIONS

We have shown that $G_{5,5}$ can be partitioned uniquely into restrictions of five circles, and that this is optimal even for coverings. That partition extends to a five-circle partition of $G_{6,5}$, also necessarily unique.

Question. *The obvious six-circle partition of $G_{6,6}$ is optimal. Is it unique?*

Question. *Theorem 1.5 (Landau) shows that, for large n , $G_{n,n}$ can be partitioned into restrictions of approximately $\sqrt{2\lambda n^2}/\ln n$ concentric circles. Can this be improved?*

REFERENCES

1. D. M. Burton, *Elementary Number Theory*, 1976, Allyn and Bacon
2. S. Chow, *Solution to Problem CC266*, *Crux Mathematicorum* **44(3)** (2018), 137
3. R. Honsberger, *Problem CC266*, *Crux Mathematicorum* **43(4)** (2017), 124–125
4. E. Landau, *Über die Einteilung der positiven ganzen Zahlen in vier Klassen nach der Mindestzahl der zu ihrer additiven Zusammensetzung erforderlichen Quadrate*, *Arch. Math. Phys.* **13** (1908), 305–312.
5. J. G. MacLauchlin, comment on [2], *Crux Mathematicorum* **44(3)** (2018), 137

SAINT MARY'S UNIVERSITY
HALIFAX, NOVA SCOTIA
CANADA B3H 3C3

E-mail address: rdawson@cs.stmarys.ca